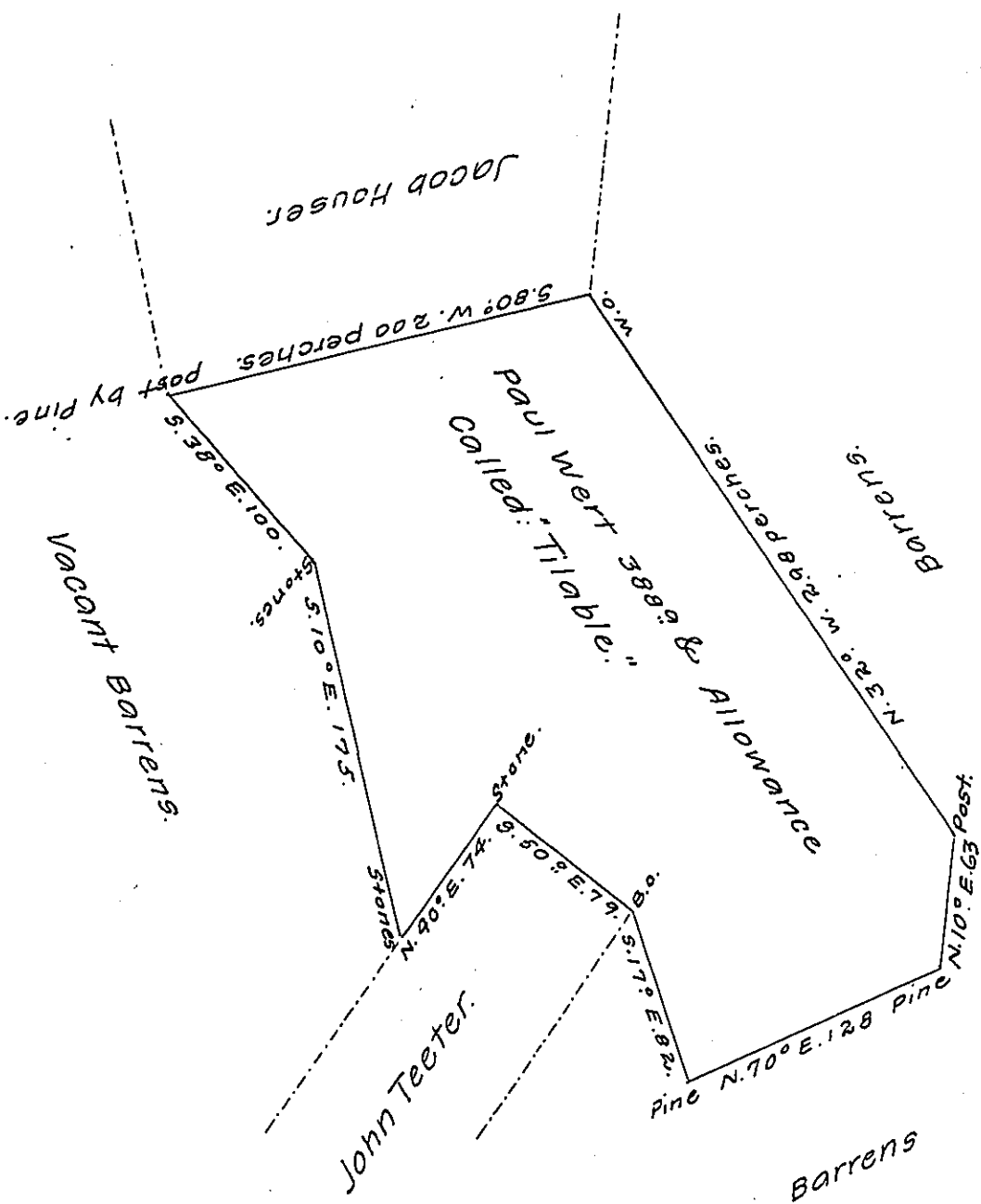


FORM No. 1.



Situated in Morris's Cove including a piece of Lime-stone Barrens in Bedford County and surveyed the 12th day of September 1786. And Returned into the Surveyor General's Office in consequence of a Warrant for 388 Acres of Land dated the 12th day of December 1785 in Morris's Cove to include the head Spring of the Middle Branch of Yellow Creek adjoining a Survey whereon Valentine Easter lives, thence down said Branch and across the Waggon Road in the County of Bedford, which Right could not be satisfied agreeable to the location thereof by reason of a Prior Warrant in the Name of Joseph Sellers bearing date the 26th day of October 1785. And in pursuance of an Act of Assembly in favor of the removal of unsatisfied Rights within the limits of the old purchase.

George Woods, D.S.

To John Lukens, Esq's }
Surveyor General.

IN TESTIMONY that the above is a copy of the original remaining on file in the Department of Internal Affairs of Pennsylvania, made conformably to an Act of Assembly approved the 16th day of February 1833, I have hereunto set my hand and caused the Seal of said Department to be affixed at Harrisburg, this eighteenth day of June 1907.

Henry Howell
Secretary of Internal Affairs.